



# NETWORKS

اللغة الإنجليزية الفنية

# OUTLINES

- What is a computer network?
- Types of the networks.
- Comparison between LAN and WAN.
- Network topology (shape).
- Some definitions.
- Some exercises.

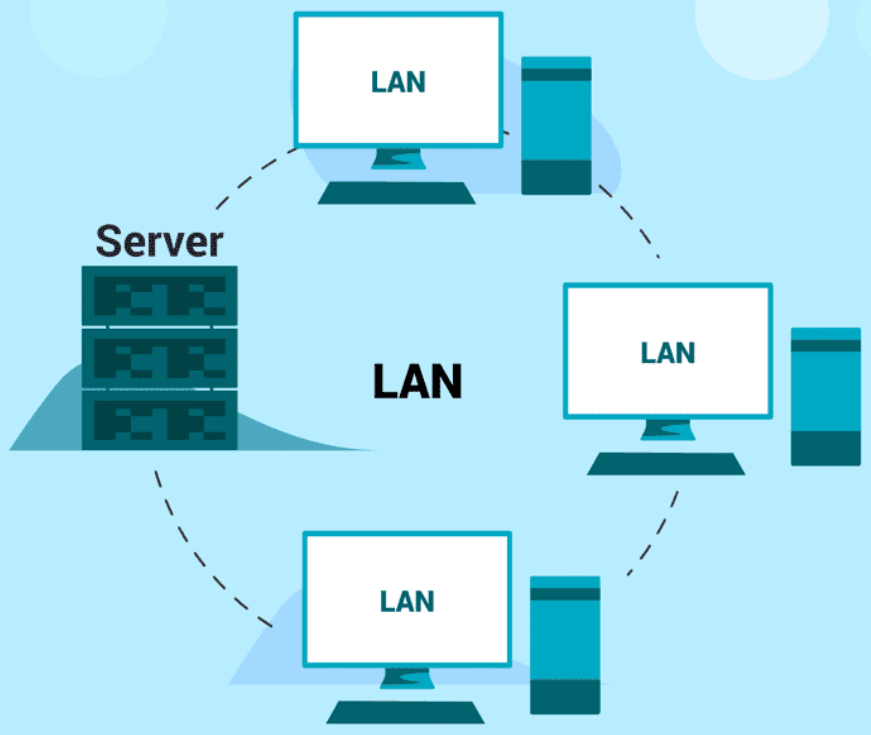
# WHAT IS A COMPUTER NETWORK?

- A computer network: a group of two or more computer systems linked together.

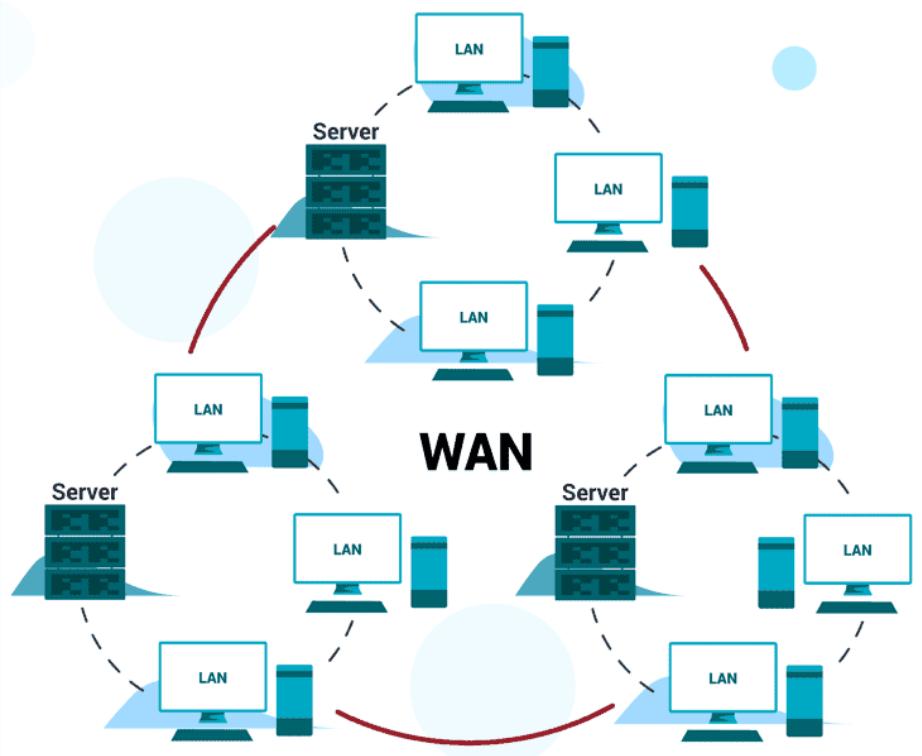


# TYPES OF COMPUTER NETWORK

- LANs: Local Area Networks
- WANs: Wide Area Network.



*Lifewire*



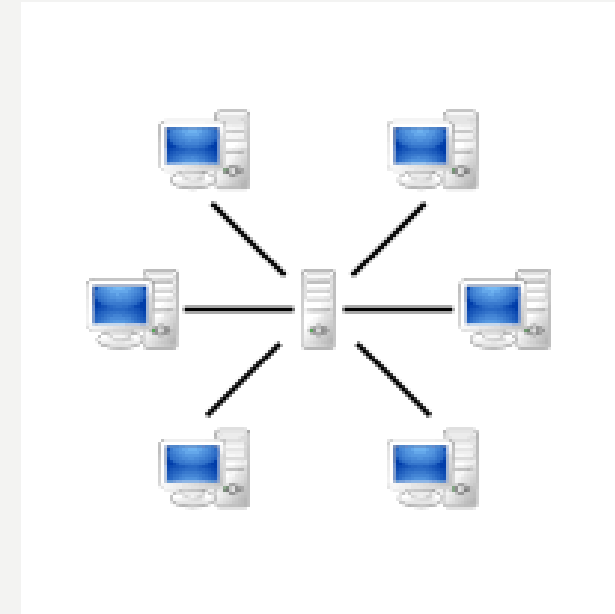
# COMPARISON BETWEEN LANS AND WANS

Side	LAN	WAN
Stands for	Local Area Network	Wide Area Network
Cover/ Spread	Local area Very small location	Large geographical areas World wide
Cost	Low	High
Example	Offices / buildings/ schools/ homes	Internet / cities/ states
Link	Peer to peer (cables) Wireless	Telephone lines Fiber optics cables Satellites

# LAN



wireless

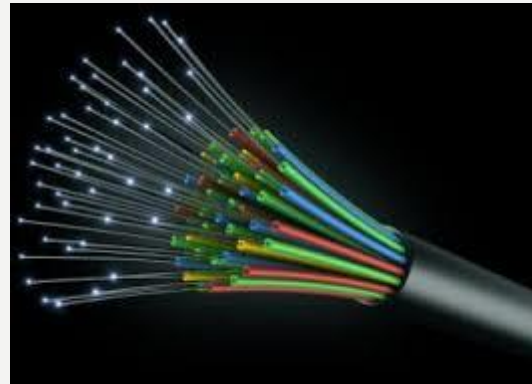


Peer to Peer

# WAN



Satellite



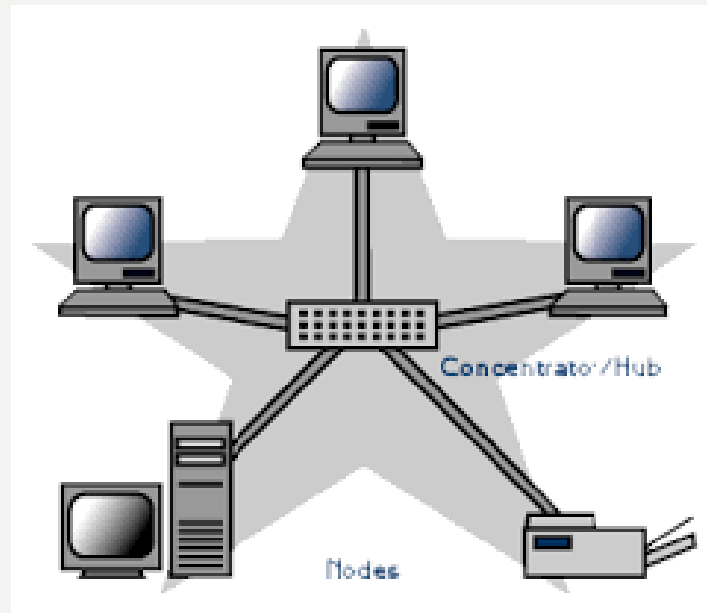
Fiber optics



Telephone lines

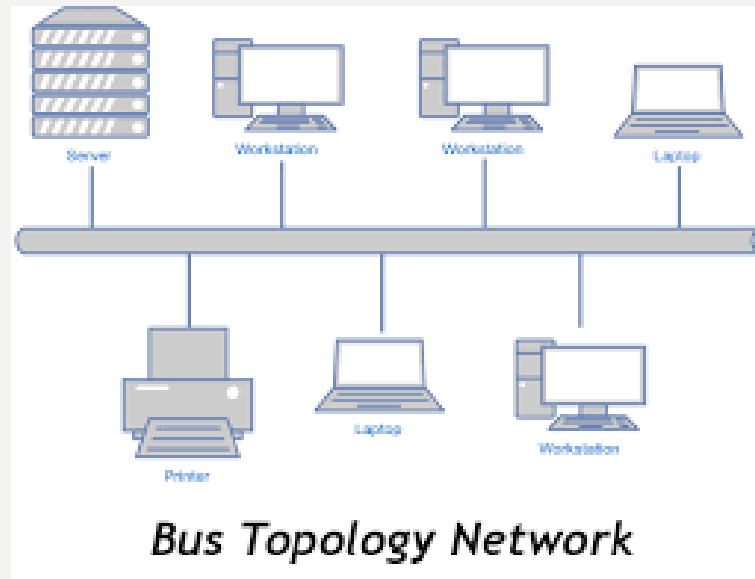


# NETWORK SHAPES (TOPOLOGIES)



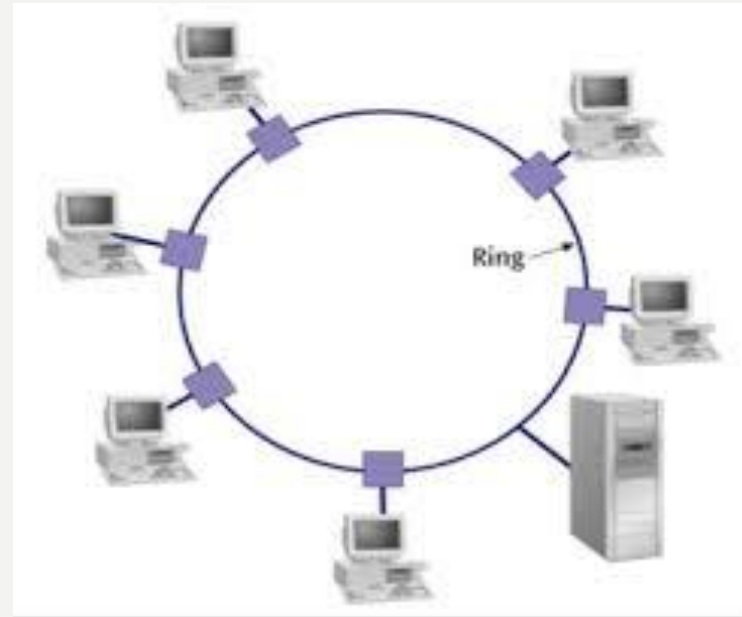
Star network

# NETWORK SHAPES (TOPOLOGIES)



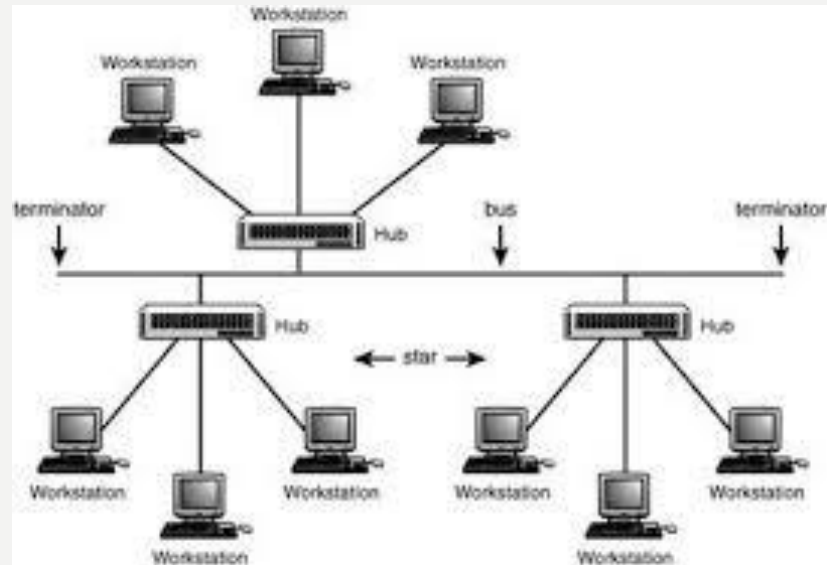
Bus network

# NETWORK SHAPES (TOPOLOGIES)



Ring network

# NETWORK SHAPES (TOPOLOGIES)



tree network

# DEFINITIONS

- Topology: the shape of a network
- LAN: it is a computer network that cover a small geographical area like home, office, school.
- WAN: it is a computer network covers broad area.
- Server/ hub: a connection point of the elements of a network that redistributed