

Selectivity

فصل الجزء الثاني Fault

→ Types of selectivity

1. Current selectivity . انتقائية خلال التيار
2. Time selectivity . انتقائية خلال الزمن
3. Logical selectivity . تكون في تواصل بين CB

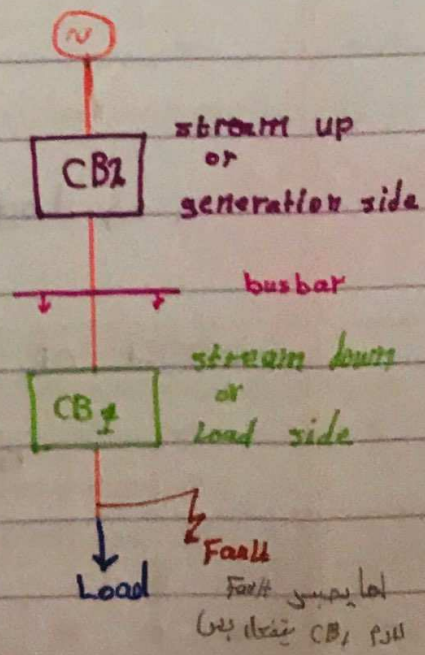
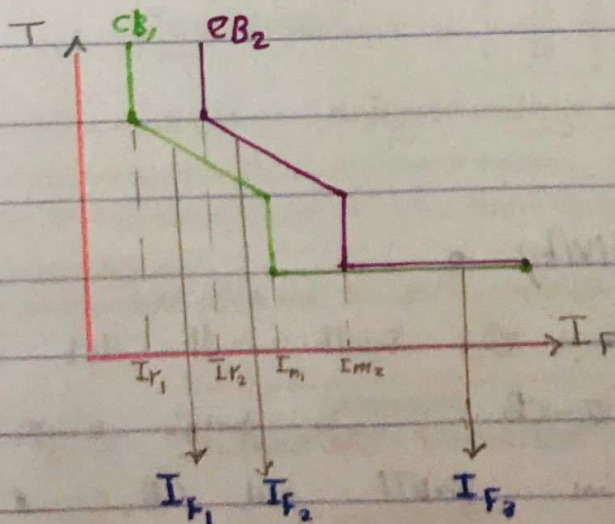
→ Selectivity by

بجعل انتقائية بطريقة

1. Characteristic curve of CB .
2. Selective Table .

من الشركة المحيطة لـ CB

* By characteristic curve



Current selectivity
الانتقائية طبقاً لتيار

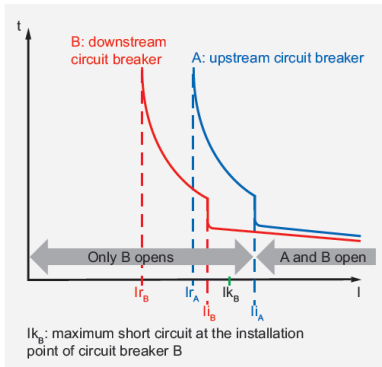
Time selectivity
الانتقائية وفقاً للزمن

ما في
Selectivity

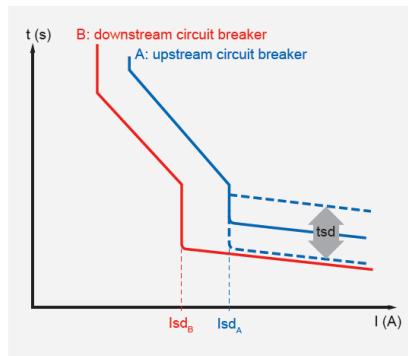
بين في فاصلة زمنية 39

Selectivity means that, when a fault occurs, only the part of the installation concerned by this fault is isolated. It is required when several protection devices are installed in series and when it is justified by safety or operating requirements.

Current sensing selectivity



Time selectivity



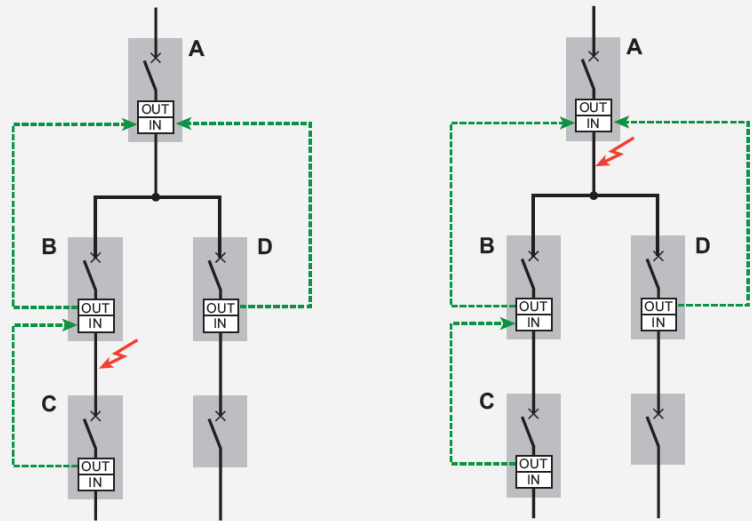
Logic selectivity

FAULT 1: SHORT CIRCUIT DOWNSTREAM OF B

Circuit breakers A and B detect the fault. Circuit breaker A receives a signal from downstream circuit breaker B and therefore remains closed, keeping to the programmed delays. As it does not receive any signal from the circuit breakers at the lower levels, circuit breaker B trips immediately, resetting any programmed delays (Tsd and/or HIGH) to zero.

FAULT 2: SHORT CIRCUIT DOWNSTREAM OF A

Only circuit breaker A detects the fault. As it does not receive any signal from the circuit breakers at the lower levels, circuit breaker A trips immediately, resetting any programmed delays (Tsd and/or HIGH) to zero.

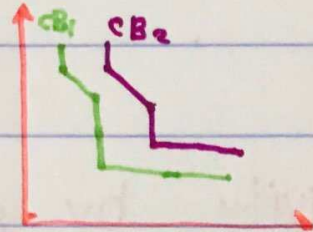


← ما هي Selectivity بعد I_{m2}

في هاي الحالة يكون

partial selectivity

لحظة تكون Total لازم 2-curves ما يلتقوا .



→ Total selectivity

لحظة يصير عند Total selectivity بتحل Shift

↓ CB₂-Curve للبيوت

وهي الحالة يكون اسمها Energy selectivity

وصلة مخلوبة . المعروفة يتم عن طريقه

CB → قديم → بغيره او بغير
 TU
 → حديث → Trip unit

• ويؤيد I_{m2}

→ Logical selectivity

اذا ال Fault وقع المنطقة CB₂

بتكون في تواصل بين 2-CB فيجب ان CB₁ اشارت

• ان CB₂ انه Fault المنطقة

* by Tables 8
 يستخدم الجداول لما يكون CB-2 مصنوعات من نفس الشركة.

How to Interpret the Selectivity Tables


Example 1—Total Selectivity

For this example, we will consider a selectivity study between two circuit breakers: 140G-J, 90 A and 1492-SPM, 8 A (Figure 1).


Figure 1 - Selectivity Between Line Side 140G-J 90 A and Load Side 1492-SPM 8 A Circuit Breakers

(I_{m2}) partial ولائي حد او total عندني اذنا خلاله اذا selectivity I_m Line side و I_m Load side

140G, J-Frame
Line side



Load side



1492-SPM

↑
تجهيز راحة


Table Legend: Numerical Values = Selectivity Limit [kA] T = Total Selectivity (for definitions, see page 2)			Line Side - 415V Incoming										
			Breaker Type: 140G J-Frame Molded Case Circuit Breaker										
			Ultimate Breaking Capacity I _{cu} [kA] = 36, 50, 70, 120										
			Thermal-magnetic Trip										
			Rated Current I _n [A]										
Breaker Type	Ultimate Breaking Capacity I _{cu} [kA]	Rated Current I _n [A]	25	30	35	40	50	60	70	80	90		
Bulletin 1492-SPM Miniature Circuit Breaker	I _{cut} 0.5...4		T	T	T	T	T	T	T	T	T	T	T
	6		—	6	6	6	7.5	10	10	T	T	T	T
	8		—	—	—	—	6	7.5	10	10	T	T	T
	10		—	—	—	—	—	6.5	7.5	7.5	—	9	9
	13		—	—	—	—	—	—	—	7.5	8	8	8
	15		—	—	—	—	—	—	—	8	8	8	8

From the coordination tables, we can determine that there is total selectivity (T) between the two circuit breakers. T = total selectivity
 This means that there is selectivity up to 15 kA, the lower of the two I_{cu} values. The maximum possible short-circuit current at the point of installation of the 1492-SPM 8A circuit breaker will be less than or equal to 15 kA.


Example 2—Partial Selectivity

Figure 2 - Selectivity Between 140G-J 60 A and 1492-SPM 8 A Circuit Breakers

140G, J-Frame



Load side



1492-SPM

I_{m2} = 7.5A
 15 - 7.5
 selectivity "partial"

Table Legend: Numerical Values = Selectivity Limit [kA] T = Total Selectivity (for definitions, see page 2)			Line Side - 415V Incoming										
			Breaker Type: 140G J-Frame Molded Case Circuit Breaker										
			Ultimate Breaking Capacity I _{cu} [kA] = 36, 50, 70, 120										
			Thermal-magnetic Trip										
			Rated Current I _n [A]										
Breaker Type	Ultimate Breaking Capacity I _{cu} [kA]	Rated Current I _n [A]	25	30	35	40	50	60	70	80	90		
Bulletin 1492-SPM Miniature Circuit Breaker	15	0.5...4	T	T	T	T	T	T	T	T	T	T	T
		6	—	6	6	6	7.5	10	10	T	T	T	T
		8	—	—	—	6	7.5	10	10	T	T	T	T
		10	—	—	—	—	7.5	7.5	7.5	9	9	9	9
		13	—	—	—	—	—	—	7.5	8	8	8	8
		16	—	—	—	—	—	—	—	8	8	8	8
	20	—	—	—	—	—	—	—	—	—	—	—	

Discrimination by time and direction

→ Type of system 8

1. Radial system .

يكون فيه source واحد و يجري كل system ال

→ Ring system .

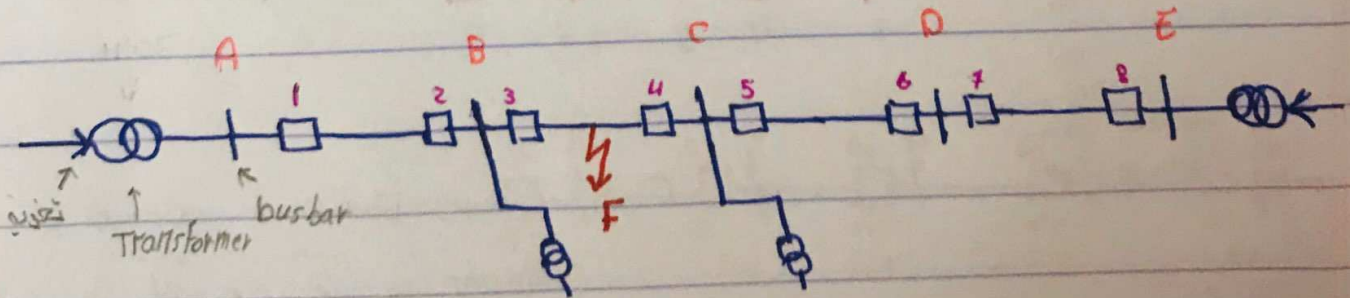
يكون فيه اكثر من source و يكون Load يتغذى من مكانين .

← افضل 8

لانه اذا هارتقع 6 ال loads

الباقية يتغذى من ال source الثاني .

* Example

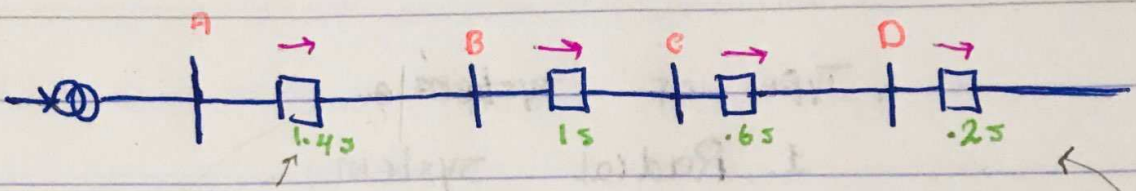


← قبل اشتغاله الانتباه على selectivity ال

و ان نشغل بهاد المالك C الانتباه والوقت .

← بما انه في 2-source و بيشغل Super Position .

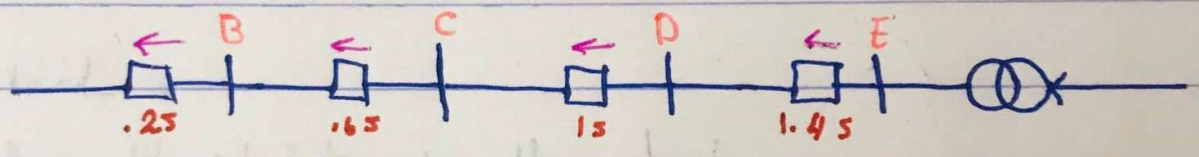
* → active only



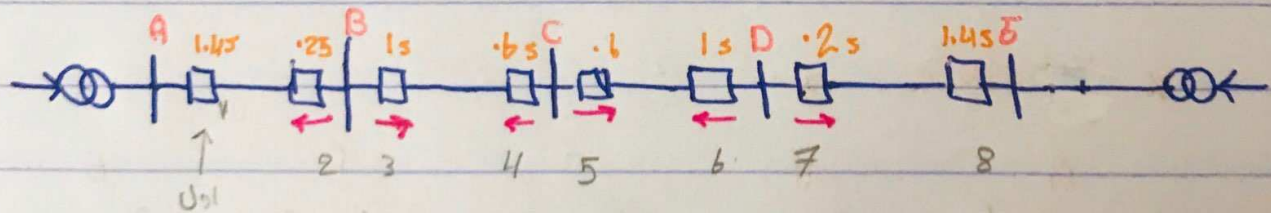
Direction
 CB
 راست یعنی
 الی الی نفسی

الوقت پہلے سے ابجد واحد $T = 0.25$
 و بعد از بصر از بد 0.45

* ← active only

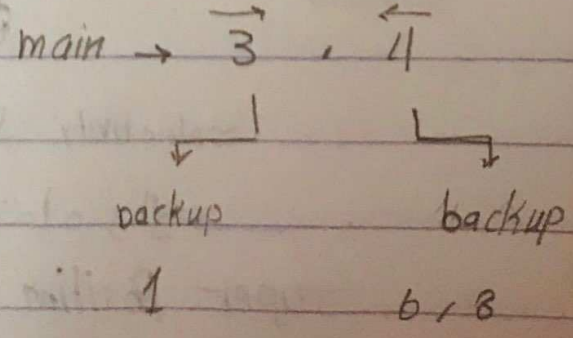


← تمام بجز حدت زمانه و اتجاه لكل CB



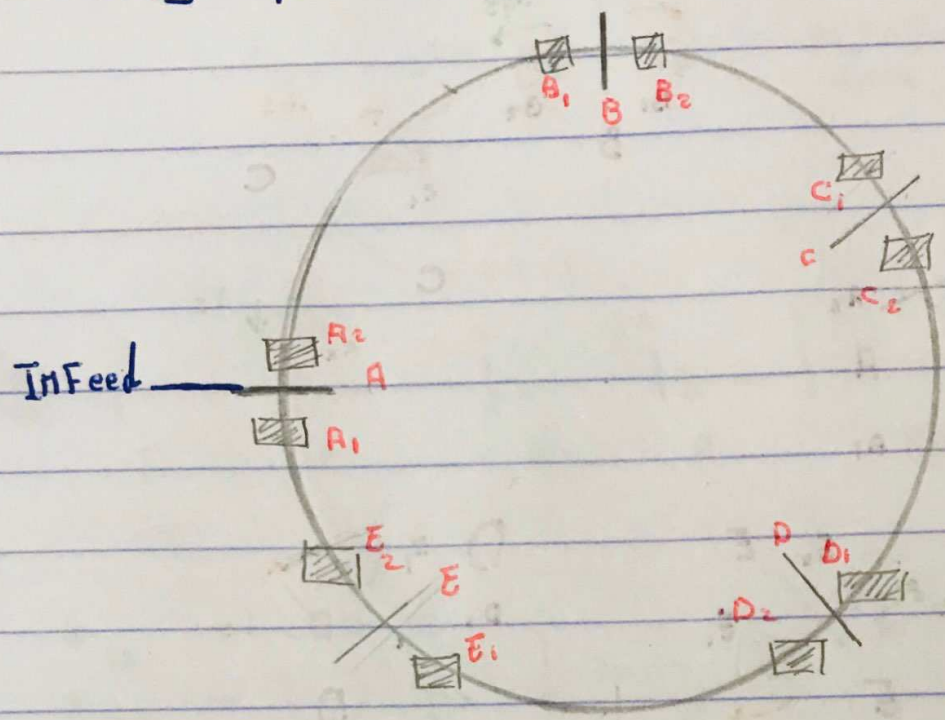
اول
 CB
 جهت الی الی
 Direction

← احوال Fault بجز C, B

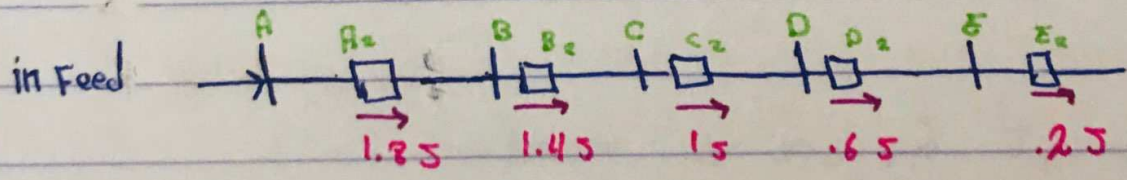


* Example 8 *

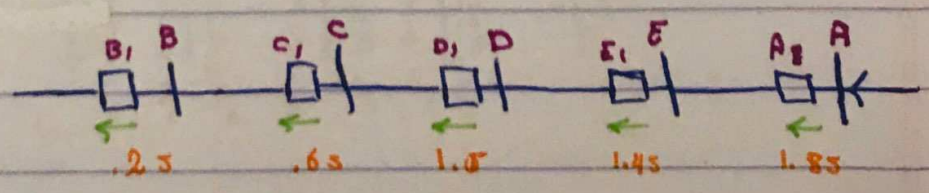
Ring system



Solution



والتالي
 وبعده
 التالي



2

