



Lab Manual

for

Computer Network Engineering Lab

by

SITTTR

Kalamassery



STATE INSTITUTE OF TECHNICAL TEACHERS TRAINING AND RESEARCH

GENERAL INSTRUCTIONS

Rough record and Fair record are needed to record the experiments conducted in the laboratory. Rough records are needed to be certified immediately on completion of the experiment. Fair records are due at the beginning of the next lab period. Fair records must be submitted as neat, legible, and complete.

INSTRUCTIONS TO STUDENTS FOR WRITING THE FAIR RECORD

In the fair record, the index page should be filled properly by writing the corresponding experiment number, experiment name, date on which it was done and the page number.

On the **right side** page of the record following has to be written:

1. **Title:** The title of the experiment should be written in the page in capital letters.
2. In the left top margin, experiment number and date should be written.
3. **Aim:** The purpose of the experiment should be written clearly.
4. **Apparatus/Tools/Equipments/Components used:** A list of the Apparatus/Tools /Equipments /Components used for doing the experiment should be entered.
5. **Principle:** Simple working of the circuit/experimental set up/algorithm should be written.
6. **Procedure:** steps for doing the experiment and recording the readings should be briefly described(flow chart/programs in the case of computer/processor related experiments)
7. **Results:** The results of the experiment must be summarized in writing and should be fulfilling the aim.
8. **Inference :** Inference from the results is to be mentioned.

On the **Left side** page of the record following has to be recorded:

1. **Circuit/Program:** Neatly drawn circuit diagrams/experimental set up.
2. **Design:** The design of the circuit/experimental set up for selecting the components should be clearly shown if necessary.



3. **Observations:** i) Data should be clearly recorded using Tabular Columns.

ii) Unit of the observed data should be clearly mentioned

iii) Relevant calculations should be shown. If repetitive calculations are needed, only show a sample calculation and summarize the others in a table.

4. **Graphs :** Graphs can used to present data in a form that show the results obtained, as one or more of the parameters are varied. A graph has the advantage of presenting large

amounts of data in a concise visual form. Graph should be in a square format.

GENERAL RULES FOR PERSONAL SAFETY

1. Always wear tight shirt/lab coat , pants and shoes inside workshops.
2. REMOVE ALL METAL JEWELLERY since rings, wrist watches or bands, necklaces, etc. make excellent electrodes in the event of accidental contact with electric power sources.
3. DO NOT MAKE CIRCUIT CHANGES without turning off the power.
4. Make sure that equipment working on electrical power are grounded properly.
5. Avoid standing on metal surfaces or wet concrete. Keep your shoes dry.
6. Never handle electrical equipment with wet skin.
7. Hot soldering irons should be rested in its holder. Never leave a hot iron unattended.
8. Avoid use of loose clothing and hair near machines and avoid running around inside lab .

TO PROTECT EQUIPMENT AND MINIMIZE MAINTENANCE:

DO: 1. SET MULTIRANGE METERS to highest range before connecting to an unknown source.

2. INFORM YOUR INSTRUCTOR about faulty equipment so that it can be sent for repair.

DO NOT: 1. Do not MOVE EQUIPMENT around the room except under the supervision of an instructor.



INDEX

<u>NO</u>	<u>LIST OF EXPERIMENTS</u>	<u>PAGE NO</u>
1	Study of different types of Network cables and Practically implement the cross-wired cable and straight through cable using clamping tool.	3
2	Install and Configure Wired and Wireless NIC and transfer files between systems in LAN and Wireless LAN.	7
3	Install and configure Network Devices: HUB, Switch and Routers.	8
4	Connect the computers in Local Area Network.	10
5	Configure Host IP, Subnet Mask and Default Gateway in a System in LAN (TCP/IP Configuration).	12
6	Establish Peer to Peer network connection using two systems using Switch and Router in a LAN.	13
7	Configure Internet connection and use IPCONFIG, PING / Tracer and Net stat utilities to debug the network issues.	15
8	Transfer files between systems in LAN using FTP Configuration, install Print server in a LAN and share the printer in a network.	18
9	Study of basic network command and Network configuration commands	20
10	Configure a Network topology using packet tracer software	23
11	Configure a Network topology using packet tracer software.	26



Experiment No: 1

Experiment: Do the following Cabling works in a network a) Cable Crimping b) Standard Cabling and c) Cross Cabling d) IO connector crimping e) Testing the crimped cable using a cable tester.

Aim:

To do the following

- a) Cable Crimping
- b) Standard Cabling
- c) Cross Cabling
- d) IO connector crimping
- e) Testing the crimped cable using a cable tester

Apparatus/Tools/Equipments/Components:

- RJ-45 connector,
- IO Connector,
- Crimping Tool,
- Twisted pair Cable,
- Cable Tester.

Principle:

Standard Cabling:

- 1. 10BaseT and 100BaseT are most common mode of LAN. You can use UTP category-5 cable for both modes.
- 2. A straight cable is used to connect a computer to a hub

RJ45 Pin # (END 1)	Wire Color	Diagram End #1	RJ45 Pin # (END 2)	Wire Color	Diagram End #2
1	White/Orange		1	White/Green	
2	Orange		2	Green	
3	White/Green		3	White/Orange	
4	Blue		4	White/Brown	
5	White/Blue		5	Brown	
6	Green		6	Orange	
7	White/Brown		7	Blue	
8	Brown		8	White/Blue	

Cross Cabling:

A cross cable is used to connect 2 computers directly (with ONLY the UTP cable). It is also used then you connect 2 hubs with a normal port on both hubs

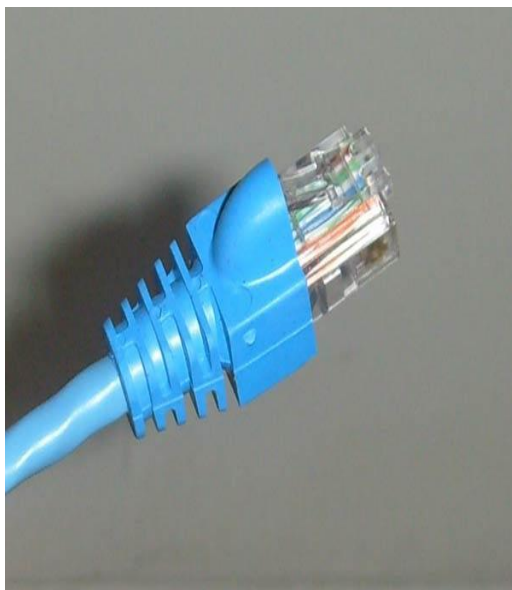
Diagram shows you how to prepare straight through wired connection

RJ45 Pin # (END 1)	Wire Color	Diagram End #1	RJ45 Pin # (END 2)	Wire Color	Diagram End #2
1	White/Orange		1	White/Green	
2	Orange		2	Green	
3	White/Green		3	White/Orange	
4	Blue		4	White/Brown	
5	White/Blue		5	Brown	
6	Green		6	Orange	
7	White/Brown		7	Blue	
8	Brown		8	White/Blue	

Procedure:

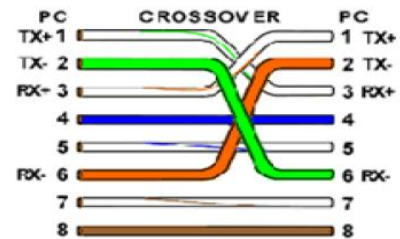
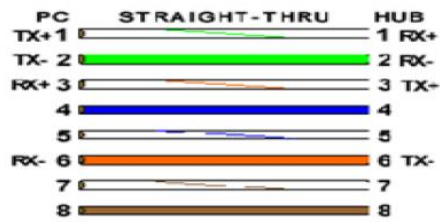
Cable Crimping steps:

1. Remove the outmost vinyl shield for 12mm at one end of the cable (we call this side A-side).
2. Arrange the metal wires in parallel
3. Insert the metal wires into RJ45 connector on keeping the metal wire arrangement.



4. Set the RJ45 connector (with the cable) on the pliers, and squeeze it tightly.

5. Make the other side of the cable (we call this side B-side) in the same way.
6. After you made it, you don't need to take care of the direction of the cable.



IO connector crimping: Run the full length of Ethernet cable in place, from endpoint to endpoint, making sure to leave excess.

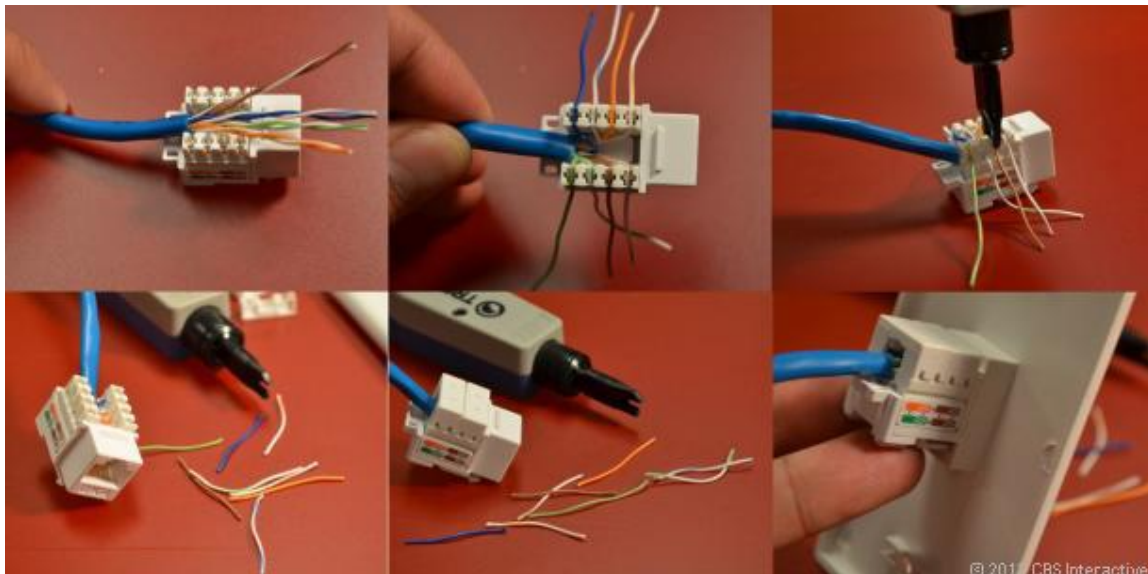
At one end, cut the wire to length leaving enough length to work, but not too much excess.

Strip off about 2 inches of the Ethernet cable sheath.

Align each of the colored wires according to the layout of the jack.

Use the punch down tool to insert each wire into the jack.

Repeat the above steps for the second RJ45 jack.



Testing the crimped cable using a cable tester:

Step 1 : Skin off the cable jacket 3.0 cm long cable stripper up to cable

Step 2: Untwist each pair and straighten each wire 190 0 1.5 cm long.

Step 3 : Cut all the wires

Step 4 : Insert the wires into the RJ45 connector right white orange left brown the pins facing up



Step 5 : Place the connector into a crimping tool, and squeeze hard so that the handle reaches its full swing.

Step 6: Use a cable tester to test for proper continuity



Result:

Cable Crimping, Standard Cabling and Cross Cabling, IO connector crimping and testing the crimped cable using a cable tester are done successfully



EXPERIMENT-2

Ex.No:2. Install and Configure Wired and Wireless NIC and transfer files between systems in LAN and Wireless LAN.

Aim:

To Install and Configure Wired and Wireless (remotely) NIC and transfer files between systems in LAN and Wireless LAN between two system in a LAN.

Principle:

NICs (Network Interface Card): Network Interface Card, or NIC is a hardware card installed in a computer so it can communicate on a network. The network adapter provides one or more ports for the network cable to connect to, and it transmits and receives data onto the network cable.

Wireless LAN card:

Every networked computer must also have a network adapter driver, which controls the network adapter. Each network adapter driver is configured to run with a certain type of network adapter.

Procedure:

(a) Install the network card:

Disconnect all cables connected to the computer and open the case. Locate an available PCI slot (white slots) and insert the network card and secure the card with the screw that came with it. Once the adapter has been installed and secured close the computer case, connect all the cables and turn it on.

After installing the adapter driver it should be working find, now let's configure the card for use on a network.

Click on the Start button and select Settings then Control Panel.

Double click on the System icon

Click on the Hardware tab.

Click on Device Manager.

You will see a list of devices installed in your computer.

If necessary, click on the + sign next to Network Adapters to expand the list.

Ensure that there is no yellow exclamation mark (!) next to the Network Adapter. This indicates a possible problem with the card or configuration.

Double click on your network driver (e.g. NE2000 Compatible).

In the Device Status box you should see the message:

This Device is working correctly.

If you do not see this message or if there is no Network Adapter displayed, then your Ethernet card will probably need configuring.

Result:

Installation and configuration of Wired and Wireless (remotely) NIC and transfer files between systems in LAN and Wireless LAN between two systems in a LAN have been done successfully.



EXPERIMENT-3

Ex. No. 3. Install and configure Network Devices: HUB, Switch and Routers.

Aim:

To Install and configure Network Devices HUB, Switch and Routers PCs are interfaced using connectivity devices.

Principle:

1. **Repeater:** Functioning at Physical Layer. A **repeater** is an electronic device that receives a signal and retransmits it at a higher level and/or higher power, or onto the other side of an obstruction, so that the signal can cover longer distances. Repeater have two ports, so cannot be use to connect for more than two devices.

2. **Hub:** An **Ethernet hub, active hub, network hub, repeater hub, hub** or **concentrator** is a device for connecting multiple twisted pair or fiber optic Ethernet devices together and making them act as a single network segment. Hubs work at the physical layer (layer 1) of the OSI model. The device is a form of multiport repeater. Repeater hubs also participate in collision detection, forwarding a jam signal to all ports if it detects a collision.

3. **Switch:** A **network switch** or **switching hub** is a computer networking device that connects network segments. The term commonly refers to a network bridge that processes and routes data at the data link layer (layer 2) of the OSI model. Switches that additionally process data at the network layer (layer 3 and above) are often referred to as Layer 3 switches or multilayer switches.

4. **Bridge:** A **network bridge** connects multiple network segments at the data link layer (Layer 2) of the OSI model. In Ethernet networks, the term *bridge* formally means a device that behaves according to the IEEE 802.1D standard. A bridge and switch are very much alike; a switch being a bridge with numerous ports. *Switch* or *Layer 2 switch* is often used interchangeably with *bridge*. Bridges can analyze incoming data packets to determine if the bridge is able to send the given packet to another segment of the network.

5. **Router:** A **router** is an electronic device that interconnects two or more computer networks, and lectively interchanges packets of data between them. Each data packet contains address information that a router can use to determine if the source and destination are on the same network, or if the data packet must be transferred from one network to another. Where multiple routers are used in a large collection of interconnected networks, the routers exchange information about target system addresses, so that each router can build up a table showing the preferred paths between any two systems on the interconnected networks.

6. **Gate Way:** In a communications network, a network node equipped for interfacing with another network that uses different protocols.

- A gateway may contain devices such as protocol translators, impedance matching devices, rate converters, fault isolators, or signal translators as necessary to provide system interoperability. It also requires the establishment of mutually acceptable administrative procedures between both networks.

- A protocol translation/mapping gateway interconnects networks with different network protocol technologies by performing the required protocol conversions.

Procedure:

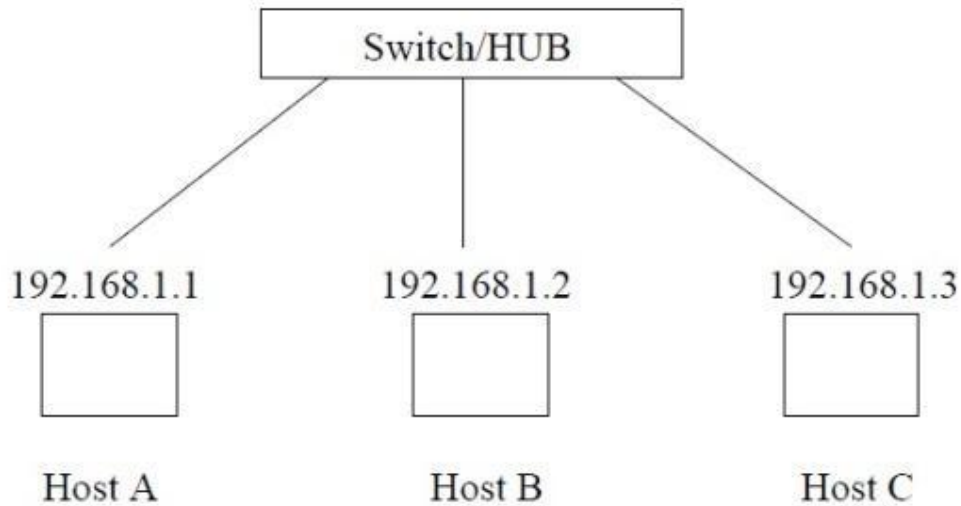


Figure 1: Establishing a LAN

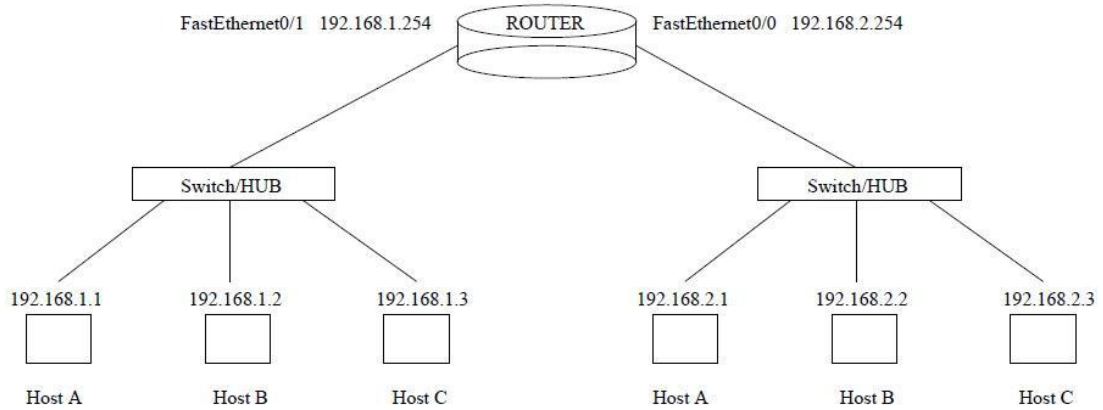


Figure 2: Connecting two LANs via router

Result:

Thus install and configure Network Devices PCs are interfaced using connectivity devices – Hub, router and switch have been done successfully.



EXPERIMENT-4

Exp No4: To Connect the computers in Local Area Network.

Aim: Connect the computers in Local Area Network.

Procedure:

On the host computer

On the host computer, follow these steps to share the Internet connection:

1. Log on to the host computer as Administrator or as Owner.
2. Click **Start**, and then click **Control Panel**.
3. Click **Network and Internet Connections**.
4. Click **Network Connections**.
5. Right-click the connection that you use to connect to the Internet. For example, if you connect to the Internet by using a modem, right-click the connection that you want under Dial-up / other network available.
6. Click **Properties**.
7. Click the **Advanced** tab.
8. Under **Internet Connection Sharing**, select the **Allow other network users to connect through this computer's Internet connection** check box.
9. If you are sharing a dial-up Internet connection, select the **Establish a dial-up connection whenever a computer on my network attempts to access the Internet** check box if you want to permit your computer to automatically connect to the Internet.
10. Click **OK**. You receive the following message:
When Internet Connection Sharing is enabled, your LAN adapter will be set to use IP address 192.168.0.1. Your computer may lose connectivity with other computers on your network. If these other computers have static IP addresses, it is a good idea to set them to obtain their IP addresses automatically. Are you sure you want to enable Internet Connection Sharing?
11. Click **Yes**.

The connection to the Internet is shared to other computers on the local area network (LAN). The network adapter that is connected to the LAN is configured with a static IP address of 192.168.0.1 and a subnet mask of 255.255.255.0

On the client computer

To connect to the Internet by using the shared connection, you must confirm the LAN adapter IP configuration, and then configure the client computer. To confirm the LAN adapter IP configuration, follow these steps:

1. Log on to the client computer as Administrator or as Owner.
2. Click **Start**, and then click **Control Panel**.
3. Click **Network and Internet Connections**.
4. Click **Network Connections**.



5. Right-click **Local Area Connection** and then click **Properties**.
 6. Click the **General** tab, click **Internet Protocol (TCP/IP)** in the **connection uses the following items** list, and then click **Properties**.
 7. In the **Internet Protocol (TCP/IP) Properties** dialog box, click **Obtain an IP address automatically** (if it is not already selected), and then click **OK**.
- Note:** You can also assign a unique static IP address in the range of 192.168.0.2 to 192.168.0.254. For example, you can assign the following static IP address, subnet mask, and default gateway:
8. IP Address 192.168.31.202
 9. Subnet mask 255.255.255.0
 10. Default gateway 192.168.31.1
 11. In the **Local Area Connection Properties** dialog box, click **OK**.
 12. Quit Control Panel.

Result:

The computers Connected in Local Area Network.



EXPERIMENT-5

Ex. No. 5. Configure Host IP, Subnet Mask and Default Gateway in a System in LAN (TCP/IP Configuration).

Aim:

To Configure IP Address in a system in LAN (TCP/IP Configuration) and Configure DNS to establish interconnection between systems

Principle: Following is required to be study under this practical.

- Classification of IP address

Class A 1.0.0.1 to 126.255.255.254 Supports 16 million hosts on each of 127 networks.

Class B 128.1.0.1 to 191.255.255.254 Supports 65,000 hosts on each of 16,000 networks.

Class C 192.0.1.1 to 223.255.254.254 Supports 254 hosts on each of 2 million networks.

Class D 224.0.0.0 to 239.255.255.255 Reserved for multicast groups.

Class E 240.0.0.0 to 254.255.255.254 Reserved.

- Sub netting

Why we Develop sub netting and How to calculate subnet mask and how to identify subnet address.

- Super netting

Why we develop super netting and How to calculate supernet mask and how to identify supernet address.

Procedure:

(a) Steps to configure IP address, Subnet mask and Default Gateway:

1. Click on the Start button and select Control Panel then Network and Internet Connections.
2. Click Network and Internet Connections.
3. Right click on the Local Area Connection icon and select Properties.
4. Select Internet Protocol (TCP/IP).
5. Click on the Properties button.
6. Uncheck that Obtain an IP address automatically and Obtain DNS server address automatically and put IP, Subnet mask & Default Gateways.
7. Click on the Advanced button and select the DNS tab in the Advanced TCP/IP Settings window.
8. Ensure that Register this connection's addresses in DNS is not selected.
9. Click OK, OK, then Close to close all boxes.

Result :

Configuration of IP Address in a system in LAN (TCP/IP Configuration) and Configuration to establish interconnection between systems have been done successfully



EXPERIMENT-6

Ex. No. 6. Establish Peer to Peer network connection using two systems using Switch and Router in a LAN.

Aim:

To establish Peer to Peer network connection using two systems in a LAN and Switch and Router in a LAN and share the Drives and folders.

Principle:

All PCs must have networking hardware already installed. Examine the back of the PC for an RJ45 port (it looks like a port for a typical phone but is wider with eight contacts).

If you have more than two PCs, you will need at least one multi-port sharing device like a hub, switch, or router with enough ports to support all your PCs.

If you are only networking two PCs, all you need is one crossover cable. You do not need a hub, switch, or router.

Multi-port sharing devices that work for creating small networks:

Hubs are usually the least expensive of the devices. Hubs simply repeat the data flow out to the other lines. These work good in small networks.

Switches are like hubs but filter IP addresses to increase data flow in larger networks.

Routers become necessary when networking over 254 computers. A router can also be used to share one IP address with several other PCs

The network link between PCs can only be as fast as the slowest device in the link. Try to use all networking devices with the same speed rating for optimal performance (this include cables).

Try to keep hubs, switches, and routers accessible.

Some hubs, switches, and routers, require the last port be used only when the cascade port is not already in use. Do not connect a network cable for a PC into the cascade port.

Procedure:

Stepping into Peer-to-Peer:

1. Click Start, Control Panel, Network Connections.
2. Select Set up a home or small office network link under Network Tasks On the left-side.
3. The Welcome to the Network Setup Wizard screen on the Network Setup Wizard appears. Click Next.
4. The Before you continue screen appears, listing the steps that will be completed. Click the checklist for creating a network link.
5. Close the Steps for creating a home or small office network screen.
6. Click Next on the Before you continue screen.
7. connect the network interfaces click Next.



8. The Select a connection method screen appears. Here you will select from three connection options Make your selection and click Next.
9. On the Select your Internet connection screen, select the network connection that relates to the Internet under Connections and click Next. You must make a selection or the Next button will remain grayed out.
10. The next screen, Your computer has multiple connections, is very important for both Internet connectivity and firewall issues. It's here you begin to assist the wizard by defining the "inside" network adapter (local area network) and the "wild-side" network adapter (Internet connection). Make the appropriate selection and click Next. In my case, I selected Let me choose the connections to my network
11. Because of the selection I made in, the Select the connections to bridge appears. Make the connection selection and click Next.
12. Complete the Computer description and Computer name fields on the Give this computer
13. Complete the Workgroup name field on the Name your network screen And click next.
14. Review your settings on the Ready to apply your network settings Screen and click next.
15. Click Finish after the configuration process is completed.

Result:

Peer to Peer network connection using two systems using Switch and Router in a LAN have been done successfully.



EXPERIMENT-7

Exp 7. Configure Internet connection and use IPCONFIG, PING / Tracer and Net stat utilities to debug the network issues.

Aim:

To Configure to Configure Internet connection and use IPCONFIG, PING / Tracer and Net stat utilities to debug the network issues establish interconnection between systems

Procedure:

Configure Internet connection and use IPCONFIG, PING:

1. Open Command Prompt, and then type ipconfig. From the display of the ipconfig command, ensure that the network adapter for the TCP/IP configuration you are testing is not in a Media disconnected state.
2. At the command prompt, ping the loopback address by typing ping 127.0.0.1.
3. Ping the IP address of the computer.
4. Ping the IP address of the default gateway. If the ping command fails, verify that the default gateway IP address is correct and that the gateway (router) is operational.
5. Ping the IP address of a remote host (a host that is on a different subnet).
If the ping command fails, verify that the remote host IP address is correct, that the remote host is operational, and that all of the gateways (routers) between this computer and the remote host are operational.
6. Ping the IP address of the DNS server.
If the ping command fails, verify that the DNS server IP address is correct that the DNS server is operational, and that all of the gateways (routers) between this computer and the DNS server are operational.

Tracer to debug the network issues.

Tracer network:

Open Command Prompt, and type the following:

tracert host_name

Or

tracert ip_address

where host_name or ip_address is the host name or IP address, respectively, of the remote computer.

If you do not want the tracert command to resolve and display the names of all routers in the path, use the -d parameter. This expedites the display of the path. For example, to trace a path from this computer to www.microsoft.com without displaying the router names, type the following at a command prompt:



Net stat utilities to debug the network issues:

Displays active TCP connections, ports on which the computer is listening, Ethernet statistics, the IP routing table, IPv4 statistics (for the IP, ICMP, TCP, and UDP protocols), and IPv6 statistics (for the IPv6, ICMPv6, TCP over IPv6, and UDP over IPv6 protocols). Used without parameters, netstat displays active TCP connections

Syntax

netstat [-a] [-e] [-n] [-o] [-p *Protocol*] [-r] [-s] [*Interval*]

Parameters

-a

Displays all active TCP connections and the TCP and UDP ports on which the computer is listening.

-e

Displays Ethernet statistics, such as the number of bytes and packets sent and received. This parameter can be combined with -s.

-n

Displays active TCP connections, however, addresses and port numbers are expressed numerically and no attempt is made to determine names.

-o

Displays active TCP connections and includes the process ID (PID) for each connection. You can find the application based on the PID on the Processes tab in Windows Task Manager. This parameter can be combined with -a, -n, and -p.

-p *Protocol*

Shows connections for the protocol specified by *Protocol*. In this case, the *Protocol* can be tcp, udp, tcpv6, or udpv6. If this parameter is used with -s to display statistics by protocol, *Protocol* can be tcp, udp, icmp, ip, tcpv6, udpv6, icmpv6, or ipv6.

-s

Displays statistics by protocol. By default, statistics are shown for the TCP, UDP, ICMP, and IP protocols. If the IPv6 protocol for Windows XP is installed, statistics are shown for the TCP over IPv6, UDP over IPv6, ICMPv6, and IPv6 protocols. The -p parameter can be used to specify a set of protocols.

-r

Displays the contents of the IP routing table. This is equivalent to the route print command.

Interval

Redisplays the selected information every *Interval* seconds. Press CTRL+C to stop the redisplay. If this parameter is omitted, netstat prints the selected information only once.

/?

Displays help at the command prompt

Result:

Thus the Configure Internet connection and use IPCONFIG, PING / Tracer and Net stat utilities to establish interconnection between systems have been done successful



EXPERIMENT- 8

Ex.No.8.Transfer files between systems in LAN using FTP Configuration, install Print server in a LAN and share the printer in a network.

Aim:

To transfer files between systems in LAN using FTP Configuration, install Print server in a LAN and share the between two system in a LAN.

Procedure:

Local Printer installs:

To Install and configure printer:

Connect the printer to parallel port of the motherboard and power cable to AC.

Switch on the system and printer.

Insert the driver disk in the CD drive.

Click start >control panel>printers and fax respectively.

Then >double click> add a printer>add printer wizard respectively.

Printer sharing:

1. Open Printers and Faxes. Click Start, click Control Panel, click Printers and Other Hardware, and then click Printers and Faxes.

2. Right-click the printer you want to share, and then click Sharing.

3. On the Sharing tab, click Share this printer and then type a share name for the shared printer.

4. If you share the printer with others using different hardware or different operating systems, click Additional Drivers. Click the Environment and operating system for the other computers, and then click OK to install the additional drivers

5. Click OK, or, if you have installed additional drivers, click Close.

To stop sharing your printer:

1. Open Printers and Faxes. Click Start, click Control Panel, click Printers and Other Hardware, and then click Printers and Faxes.

2. Right-click the printer you want to stop sharing, and then click Sharing.

3. On the Sharing tab, click Do Not share this printer.

To connect to a printer on a network:

1. Open Printers and Faxes. Click Start, click Control Panel, click Printers and Other Hardware, and then click Printers and Faxes.

2. Under Printer Tasks, click Add a printer to open the Add Printer Wizard, and then click Next.

3. Click A network printer, or a printer attached to another computer, and then click Next.

Three Ways to Connect to a Printer on a Network:

To search for a printer in Active Directory

1. Click Find a printer in the directory, and then click Next.



2. Click the Browse button to the right of Location, click the printer location, and then click OK.
 3. Click Find Now.
 4. Click the printer you want to connect to, and then click OK.
- To locate a printer by typing the printer name or browsing for it
1. Click Connect to this printer.
 2. Do one of the following:

Type the printer name using the following format:

\\printserver_name\share_name

Browse for it on the network. Click Next, click the printer in Shared printers.

1. Click Next.

Result:

To transfer files between systems in LAN using FTP Configuration, install Print server in a LAN and share the between two system in a LAN.



EXPERIMENT- 9

Network configuration

Aim: Study of basic network command and Network configuration commands.

Apparatus (Software): Command Prompt And Packet Tracer.

Principle:

All commands related to Network configuration which includes how to switch to privilege mode and normal mode and how to configure router interface and how to save this configuration to flash memory or permanent memory.

This commands includes

- Configuring the Router commands
- General Commands to configure network
- Privileged Mode commands of a router
- Router Processes & Statistics
- IP Commands
- Other IP Commands e.g. show ip route etc.

Procedure:

To do this EXPERIMENT- follows these steps:

ping:

ping(8) sends an ICMP ECHO_REQUEST packet to the specified host. If the host responds, you get an ICMP packet back. Sound strange? Well, you can “ping” an IP address to see if a machine is alive. If there is no response, you know something is wrong.

Traceroute:

Tracert is a command which can show you the path a packet of information takes from your computer to one you specify. It will list all the routers it passes through until it reaches its destination, or fails to and is discarded. In addition to this, it will tell you how long each 'hop' from router to router takes.

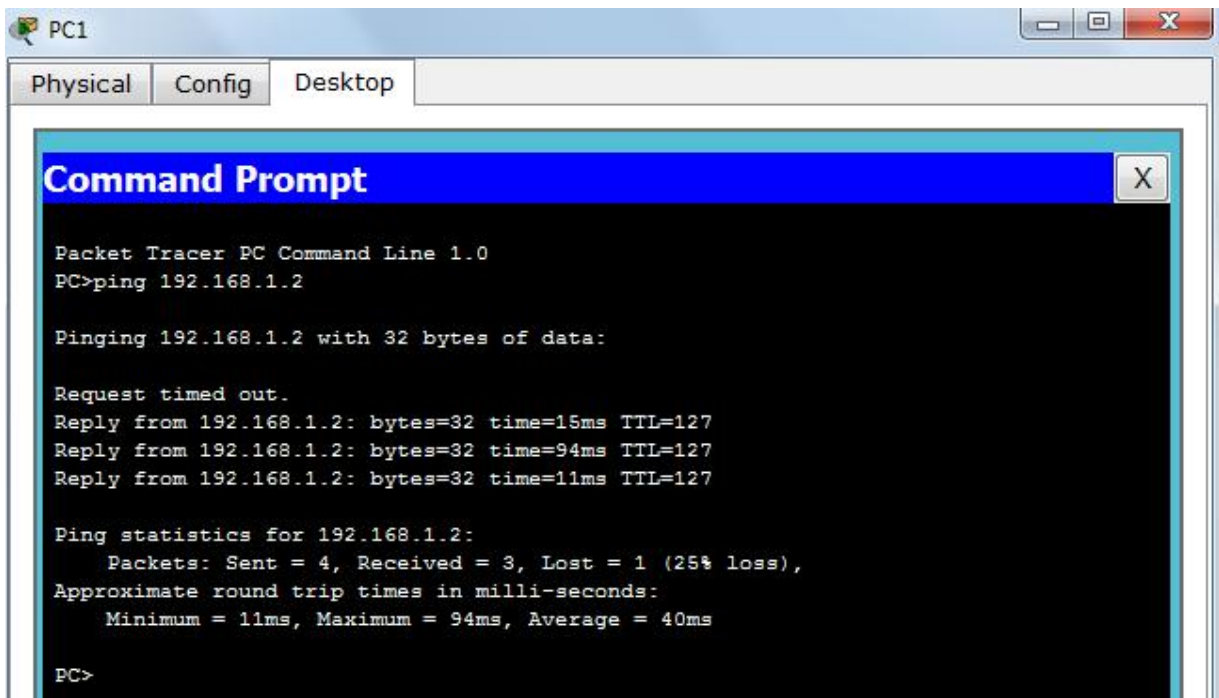
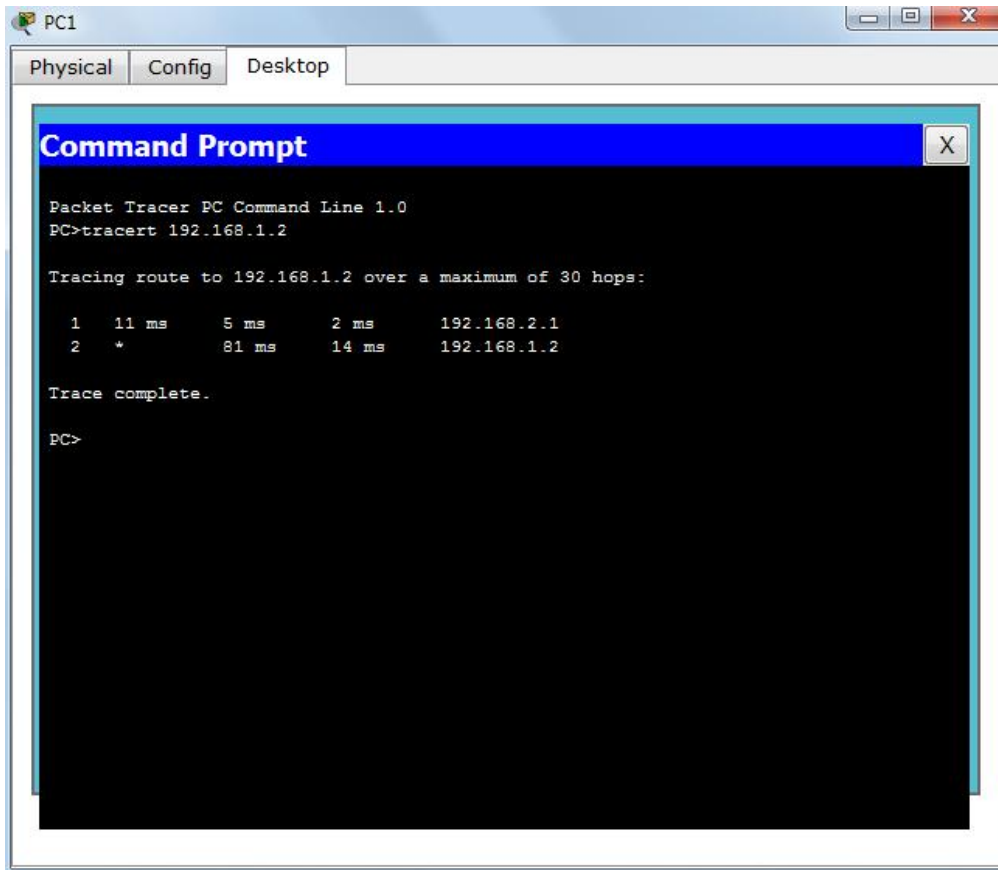
nslookup:

Displays information from Domain Name System (DNS) name servers.

NOTE :If you write the command as above it shows as default your pc's server name firstly.

pathping:

A better version of tracert that gives you statistics about packet lost and latency





```
Administrator: C:\windows\system32\cmd.exe
C:\Users\lenovo>pathping 192.168.1.12
Tracing route to 192.168.1.12 over a maximum of 30 hops
  0  lenovo-PC.dronacharya [192.168.1.97]
  1  lenovo-PC.dronacharya [192.168.1.97]  reports: Destination host unreachable
.
Computing statistics for 25 seconds...
Hop  RTT      Source to Here   This Node/Link   Address
  0          Lost/Sent = Pct  Lost/Sent = Pct  lenovo-PC.dronacharya [192.168.1.97]
  1  ---      100/ 100 =100%   0/ 100 = 0%     lenovo-PC [0.0.0.0]
Trace complete.
C:\Users\lenovo>_
```

Getting Help

In any command mode, you can get a list of available commands by entering a question mark (?).

Router>?

To obtain a list of commands that begin with a particular character sequence, type in those characters followed immediately by the question mark (?).

Router#co?

configure connect copy

To list keywords or arguments, enter a question mark in place of a keyword or argument. Include a space before the question mark.

Router#configure ?

- memory Configure from NV memory
- network Configure from a TFTP network host
- terminal Configure from the terminal

You can also abbreviate commands and keywords by entering just enough characters to make the command unique from other commands. For example, you can abbreviate the **show** command to **sh**.

Configuration Files

Any time you make changes to the router configuration, you must save the changes to memory because if you do not they will be lost if there is a system reload or power outage. There are two types of configuration files: the running (current operating) configuration and the startup configuration.

Use the following privileged mode commands to work with configuration files.



- **configure terminal** – modify the running configuration manually from the terminal.
- **show running-config** – display the running configuration.
- **show startup-config** – display the startup configuration.
- **copy running-config startup-config** – copy the running configuration to the startup configuration.
- **copy startup-config running-config** – copy the startup configuration to the running configuration.
- **erase startup-config** – erase the startup-configuration in NVRAM.
- **copy tftp running-config** – load a configuration file stored on a Trivial File Transfer Protocol (TFTP) server into the running configuration.
- **copy running-config tftp** – store the running configuration on a TFTP server.

IP Address Configuration

Take the following steps to configure the IP address of an interface.

Step 1: Enter privileged EXEC mode:

Router>**enable** password

Step 2: Enter the **configure terminal** command to enter global configuration mode.

Router#**config terminal**

Step 3: Enter the **interface** type slot/port (for Cisco 7000 series) or **interface** type port (for Cisco 2500 series) to enter the interface configuration mode.

Example:

Router (config)#**interface ethernet 0/1**

Step 4: Enter the IP address and subnet mask of the interface using the **ip address** ipaddress subnetmask command.

Example,

Router (config-if)#**ip address 192.168.10.1 255.255.255.0**

Step 5: Exit the configuration mode by pressing Ctrl-Z

Router(config-if)#**[Ctrl-Z]**

Result:

The network configuration done successfully.

EXPERIMENT-10

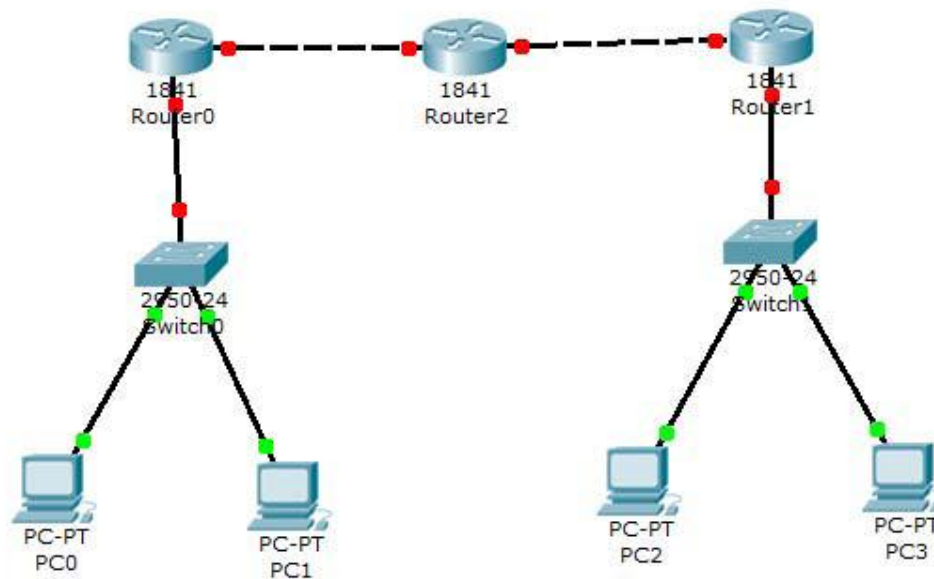
Configure a Network topology

Aim: Configure a Network topology using packet tracer software.

Apparatus (Software): Packet tracer Software

Principle: To implement this practical following network topology is required to be configured using the commands learned in previous practical.

After configuring the given network a packet should be ping from any one machine to another.



Procedure:

Router0 Configuration Command :.....

Continue with configuration dialog? [yes/no]: no

Press RETURN to get started!

Router>

Router>Enable

Router#config t

Enter configuration commands, one per line. End with CNTL/Z.

Router(config)#hostname router0

router0(config)#interface fastethernet 0/0

router0(config-if)#ip address 192.168.1.1 255.255.255.0

router0(config-if)#description router0 fastethernet 0/0

router0(config-if)#no shutdown



```
%LINK-5-CHANGED: Interface FastEthernet0/0, changed state to up
router0(config-if)#exit
router0(config)#interface fastethernet 0/1
router0(config-if)#description router0 fastethernet 0/1
router0(config-if)#no shutdown
%LINK-5-CHANGED: Interface FastEthernet0/1, changed state to up
router0(config-if)#exit
router0(config)#exit
%SYS-5-CONFIG_I: Configured from console by console
router0#show running-config
Building configuration...
Current configuration : 437 bytes
!
version 12.4
no service password-encryption
!
hostname router0
!
!
!
!
!
!
ip ssh version 1
!
!
interface FastEthernet0/0
description router0 fastethernet 0/0
ip address 192.168.1.1 255.255.255.0
duplex auto
speed auto
!
interface FastEthernet0/1
description router0 fastethernet 0/1
no ip address
duplex auto
speed auto
!
interface Vlan1
no ip address
shutdown
!
ip classless
!
!
!
!
```



```
!  
line con 0  
line vty 0 4  
login  
!  
!  
end  
router0#  
router0#  
router0#copy running-config startup-config  
Destination filename [startup-config]?  
Building configuration...  
[OK]  
router0#
```

Result:

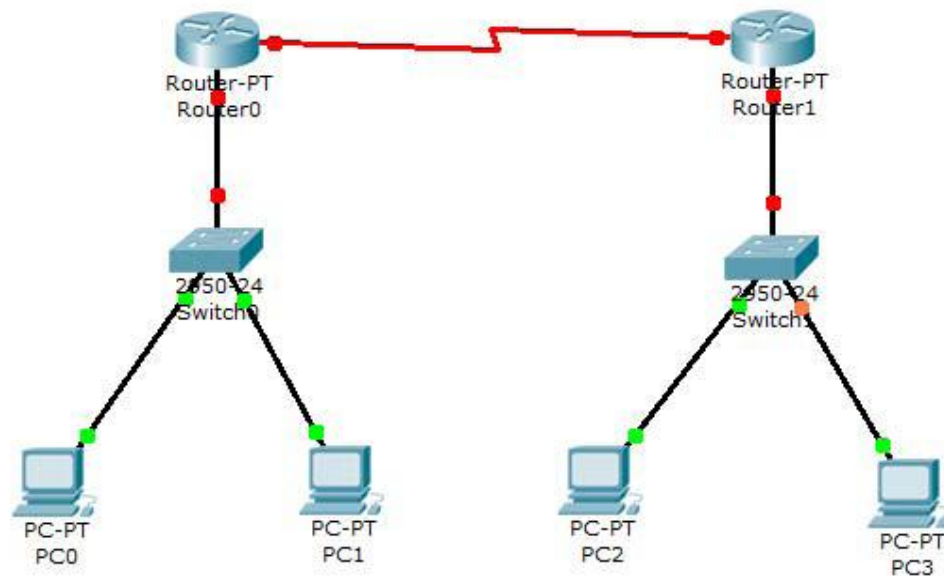
The network configuration done successfully.

EXPERIMENT-11 Configure a Network topology

Aim: Configure a Network topology using packet tracer software.

Apparatus (Software): Packet tracer Software

Principle: To implement this practical following network topology is required to be configured using the commands learned in previous practical.
After configuring the given network a packet should be ping from any one machine to another.



Procedure:

Router0 Configuration Command.....

```
Router>enable
```

```
Router#configure terminal
```

Enter configuration commands, one per line. End with CNTL/Z.

```
Router(config)#interface FastEthernet0/0
```

```
Router(config-if)#ip address 192.168.0.254 255.255.255.0
```

```
Router(config-if)#no shutdown
```

```
%LINK-5-CHANGED: Interface FastEthernet0/0, changed state to up
```

```
%LINEPROTO-5-UPDOWN: Line protocol on Interface FastEthernet0/0, changed state to up
```

```
Router(config-if)#exit
```

```
Router(config)#exit
```

```
%SYS-5-CONFIG_I: Configured from console by console
```

```
Router#
```

```
Router#configure terminal
```



```
Enter configuration commands, one per line. End with CNTL/Z.
Router(config)#interface FastEthernet0/0
Router(config-if)#
Router(config-if)#exit
Router(config)#interface Serial2/0
Router(config-if)#ip address 192.168.1.1 255.255.255.0
Router(config-if)#no shutdown
%LINK-5-CHANGED: Interface Serial2/0, changed state to down
Router(config-if)#exit
Router(config)#exit
%SYS-5-CONFIG_I: Configured from console by console
Router#wr
Building configuration...
[OK]
Router#show running-config
Building configuration...
Current configuration : 542 bytes
!
version 12.2
no service password-encryption
!
hostname Router
!
!
!
!
!
ip ssh version 1
!
!
interface FastEthernet0/0
ip address 192.168.0.254 255.255.255.0
duplex auto
speed auto
!
interface FastEthernet1/0
no ip address
duplex auto
speed auto
shutdown
!
interface Serial2/0
ip address 192.168.1.1 255.255.255.0
!
interface Serial3/0
no ip address
```



```
shutdown
!  
interface FastEthernet4/0  
no ip address  
shutdown  
  
!  
interface FastEthernet5/0  
no ip address  
shutdown  
  
!  
ip classless  
!  
!  
!  
!  
!  
!  
line con 0  
line vty 0 4  
login  
!  
!  
end  
Router#
```

Router1 Configuration Command.....

```
Continue with configuration dialog? [yes/no]: no  
Press RETURN to get started!  
Router>enable  
Router#  
Router#configure terminal  
Enter configuration commands, one per line. End with CNTL/Z.  
Router(config)#interface Serial2/0  
Router(config-if)#ip address 192.168.1.2 255.255.255.0  
Router(config-if)#no shutdown  
%LINK-5-CHANGED: Interface Serial2/0, changed state to up  
Router(config-if)#exit  
Router(config)#exit  
%SYS-5-CONFIG_I: Configured from console by console  
Router#config t  
Enter configuration commands, one per line. End with CNTL/Z.  
Router(config)#  
Router(config)#interface Serial2/0  
Router(config-if)#  
Router(config-if)#exit  
Router(config)#interface FastEthernet0/0
```



```
Router(config-if)#ip address 192.168.2.254 255.255.255.0
Router(config-if)#no shutdown
%LINK-5-CHANGED: Interface FastEthernet0/0, changed state to up
%LINEPROTO-5-UPDOWN: Line protocol on Interface FastEthernet0/0, changed state to
up
Router(config-if)#exit
Router(config)#exit
%SYS-5-CONFIG_I: Configured from console by console
Router#wr
Building configuration...
[OK]
Router#
Router#show running-config
Building configuration...
Current configuration : 542 bytes
!
version 12.2
no service password-encryption
!
hostname Router
!
!
!
!
!
ip ssh version 1
!
!
interface FastEthernet0/0
ip address 192.168.2.254 255.255.255.0
duplex auto
speed auto
!
interface FastEthernet1/0
no ip address
duplex auto
speed auto
shutdown
!
interface Serial2/0
ip address 192.168.1.2 255.255.255.0
!
interface Serial3/0
no ip address
shutdown
!
```



```
interface FastEthernet4/0
no ip address
shutdown
!
interface FastEthernet5/0
no ip address
shutdown
!
ip classless
!
!
!
!
!
!
line con 0
line vty 0 4
login
!
!
end
Router#
```

IP ROUTE Command.....

```
Router#config t
Enter configuration commands, one per line. End with CNTL/Z.
Router(config)#ip route 192.168.2.0 255.255.255.0 192.168.2.2
Router(config)#exit
Router#show ip route
Codes: C - connected, S - static, I - IGRP, R - RIP, M - mobile, B - BGP
D - EIGRP, EX - EIGRP external, O - OSPF, IA - OSPF inter area
N1 - OSPF NSSA external type 1, N2 - OSPF NSSA external type 2
E1 - OSPF external type 1, E2 - OSPF external type 2, E - EGP
i - IS-IS, L1 - IS-IS level-1, L2 - IS-IS level-2, ia - IS-IS inter area
* - candidate default, U - per-user static route, o - ODR
P - periodic downloaded static route
Gateway of last resort is not set
C 192.168.2.0/24 is directly connected, FastEthernet0/0
C 192.168.1.2/24 is directly connected, Serial2/0
S 192.168.2.0/24 [1/0] via 192.168.1.2
Router#
```

IP ROUTE Command.....

```
Router>enable
Router#show ip route
```




Codes: C - connected, S - static, I - IGRP, R - RIP, M - mobile, B - BGP
D - EIGRP, EX - EIGRP external, O - OSPF, IA - OSPF inter area
N1 - OSPF NSSA external type 1, N2 - OSPF NSSA external type 2
E1 - OSPF external type 1, E2 - OSPF external type 2, E - EGP
i - IS-IS, L1 - IS-IS level-1, L2 - IS-IS level-2, ia - IS-IS inter area
* - candidate default, U - per-user static route, o - ODR
P - periodic downloaded static route
Gateway of last resort is not set
S 192.168.0.0/24 [1/0] via 192.168.1.1
C 192.168.0.0/24 is directly connected, FastEthernet0/0
C 192.168.1.1/24 is directly connected, Serial2/0
Router#

Result:

The network configuration done successfully.